

## CORPORATE INFORMATION

As of June 30, 2005

COMPANY NAME:	Japan Securities Depository Center, Inc.
DATE OF INCORPORATION:	January 4, 2002
DATE OPERATIONS BEGAN:	June 17, 2002
CAPITAL:	¥4.25 billion (shareholders' equity ¥11.4 billion)
COMMON STOCK ISSUED:	8,500 shares
NUMBER OF SHAREHOLDERS:	191
NUMBER OF EMPLOYEES:	123

REGISTERED HEAD OFFICE	1-1, Nihombashi-Kayaba-cho 2-chome Chuo-ku, Tokyo 103-0025, Japan Phone: +81-3-3661-0161 Facsimile: +81-3-3661-2810 Website: <a href="http://www.jasdec.com">http://www.jasdec.com</a>
------------------------	--

### OPERATIONS OFFICES

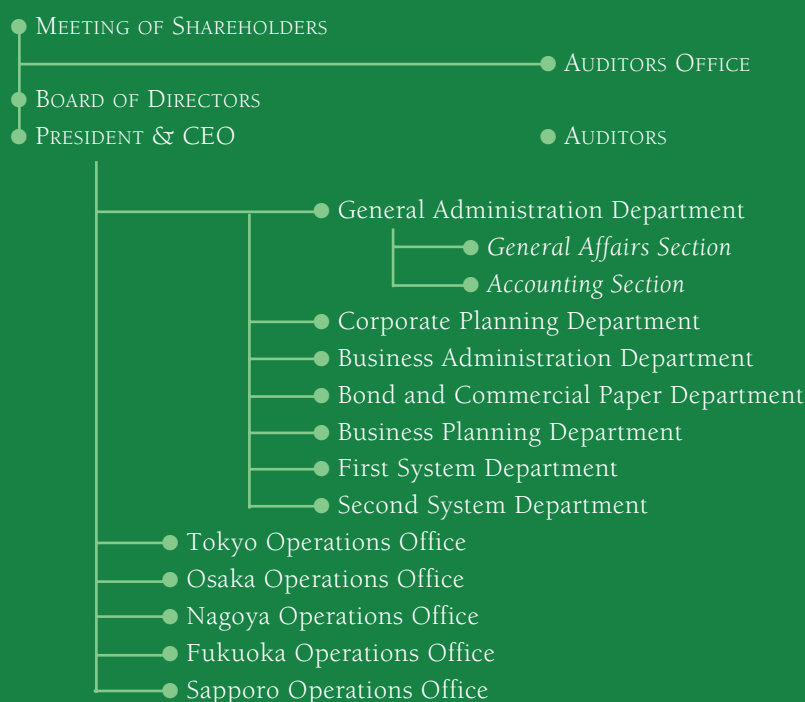
Tokyo Office:	6th Floor, Daini-Shoken Kaikan Bldg. 1-1, Nihombashi-Kayaba-cho 2-chome, Chuo-ku, Tokyo 103-0025
Osaka Office:	6-10, Kitahama 1-chome, Chuo-ku, Osaka 541-0041
Nagoya Office:	3-17, Sakae 3-chome, Naka-ku, Nagoya 460-0008
Fukuoka Office:	14-2, Tenjin 2-chome, Chuo-ku, Fukuoka 810-0001
Sapporo Office:	14-1, Minamiichijo-Nishi 5-chome, Chuo-ku, Sapporo 060-0061

### SUBSIDIARY COMPANY

Company Name:	JASDEC DVP Clearing Corporation
Date of Incorporation:	June 6, 2003
Commenced Operations:	May 17, 2004
Capital:	¥310 million
Registered Head Office:	1-1, Nihombashi-Kayaba-cho 2-chome, Chuo-ku, Tokyo 103-0025

## ORGANIZATION STRUCTURE

(As of June 30, 2005)





JAPAN SECURITIES DEPOSITORY CENTER, INC.