

## Profile of the company

Corporate Name	Japan Securities Depository Center, Incorporated
Registered Office Address	1-1 Nihombashi-Kayaba-cho, 2-chome, Chuo-ku, Tokyo, Japan
Established	January 4, 2002
Representative	President and CEO Haruhiko Kato (as of June 20, 2011)
Major Businesses	(1) Book-entry transfer for stocks, etc. (2) Book-entry transfer for commercial paper (3) Book-entry transfer for corporate bonds (4) Book-entry transfer for investment trusts (5) DVP settlement services for NETDs (6) Pre-settlement matching system (7) Custody services for foreign stocks, etc. (8) Other businesses
Operational Office	Tokyo
Consolidated Subsidiary	JASDEC DVP Clearing Corporation (Chuo-ku, Tokyo)
Number of Employees	208

## Board Members and Auditors (As of July 1, 2011)

Chairman  
**Yoshinobu Takeuchi**

President & CEO  
**Haruhiko Kato**  
President, JASDEC DVP Clearing Corporation

Managing Director  
**Seikichi Ihara**  
Managing Director, JASDEC DVP Clearing Corporation

Managing Director  
**Yoshinori Seyama**  
Managing Director, JASDEC DVP Clearing Corporation

Managing Director  
**Munetaka Saito**  
Managing Director, JASDEC DVP Clearing Corporation

Director  
**Moriyuki Iwanaga**  
Executive Officer, Tokyo Stock Exchange, Inc.

Director  
**Masakazu Kubota**  
Senior Managing Director, Japan Business Federation

Director  
**Ritsuro Koza**  
Senior Managing Director, Nomura Securities Co., Ltd.

Director  
**Masahiko Koyanagi**  
Executive Director, Japan Securities Dealers Association

Director  
**Masaru Takei**  
Executive Vice President, Tokyo Electric Power Company

Director  
**Yasushi Tachihara**  
Executive Officer, SMBC Nikko Securities Inc.

Director  
**Ayumi Tomoda**  
Operations Head, Citigroup Global Markets Japan Inc.

Director  
**Masahisa Nakagawa**  
Senior Managing Director,  
Daiwa Securities Capital Markets Co. Ltd.

Director  
**Kunihisa Hama**  
Lawyer

Director  
**Masayuki Hoshi**  
Managing Executive Officer, Mizuho Corporate Bank, Ltd.

Director  
**Shigeyuki Maeda**  
Professor of Law, Professional School of Law(Law school),  
Professional Course in Law Gakushuin University

Director  
**Kanetsugu Mike**  
Managing Director, The Bank of Tokyo-Mitsubishi UFJ, Ltd.

Director  
**Hiroshi Misawa**  
Senior Executive Officer,  
Chuo Mitsui Asset Trust and Banking Company, Limited

Director  
**Akira Moriwaki**  
Managing Executive Officer,  
Mizuho Trust & Banking Co., Ltd.

Standing Auditor  
**Hiroshi Kitta**  
Auditor, JASDEC DVP Clearing Corporation  
Auditor, Tosho System Service Co., Ltd.

Auditor  
**Jun Ohta**  
Director and General Manager,  
Sumitomo Mitsui Banking Corporation

Auditor  
**Masahiko Kawaguchi**  
Senior Executive Officer, Tokai Tokyo Securities Co., Ltd.

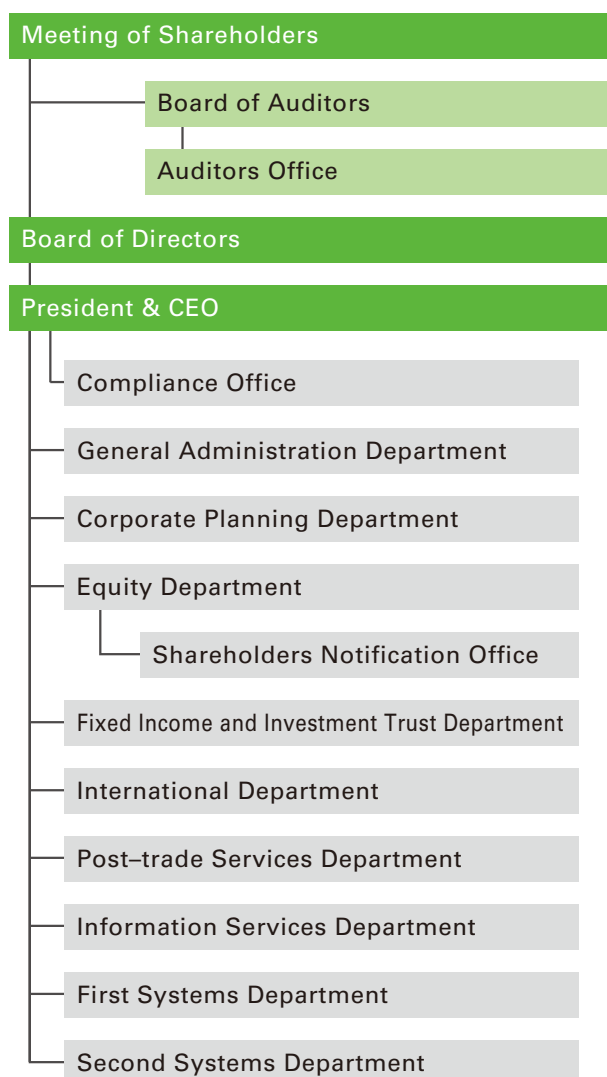
## Shares

Total shares approved for issue	10,000
Total issued shares	8,500
Paid-in capital	¥4,250,000,000
Shareholders	155

## Major shareholders

	Number of shares held	Stake in Company (%)
Tokyo Stock Exchange Group, Inc.	1,928	22.68
Japan Securities Dealers Association	1,049	12.34
Nomura Holdings, Inc.	485	5.70
The Bank of Tokyo-Mitsubishi UFJ, Ltd.	425	5.00
Mizuho Corporate Bank, Ltd.	425	5.00
Mitsubishi UFJ Trust and Banking Corporation	424	4.98
Citigroup Global Markets Japan Inc.	321	3.77
Japan Trustee Services Bank, Ltd.	320	3.76
Trust & Custody Services Bank, Ltd.	284	3.34
Daiwa Securities Capital Markets Co. Ltd.	230	2.70

## Organization structure





Japan Securities Depository Center, Inc.

Daini-Shoken Kaikan Bldg,  
1-1, Nihombashi-Kayabacho 2-chome Chuo-ku,  
Tokyo 103-0025, JAPAN  
TEL +81-3-3661-0139

[www.jasdec.com/en/](http://www.jasdec.com/en/)