

# Corporate Data

(As of March 31, 2012)

## Profile of the company

Corporate Name	Japan Securities Depository Center, Incorporated
Registered Office Address	1-1 Nihombashi-Kayaba-cho, 2-chome, Chuo-ku, Tokyo, Japan
Established	January 4, 2002
Representative	President and CEO Haruhiko Kato
Major Businesses	(1) Book-entry transfer for stocks, etc. (2) Book-entry transfer for commercial paper (3) Book-entry transfer for corporate bonds (4) Book-entry transfer for investment trusts (5) DVP settlement services for NETDs (6) Pre-settlement matching system (7) Custody services for foreign stocks, etc. (8) Other businesses
Operational Office	Tokyo
Consolidated Subsidiary	JASDEC DVP Clearing Corporation (Chuo-ku, Tokyo)
Number of Employees	222

## Board Members and Auditors (As of June 29, 2012)

### Chairman

**Yoshinobu Takeuchi**

### President & CEO

**Haruhiko Kato**

### Managing Director

**Seikichi Ihara**

### Managing Director

**Yoshinori Seyama**

### Managing Director

**Munetaka Saito**

### Director

**Moriyuki Iwanaga**

Executive Officer,  
Tokyo Stock Exchange, Inc.

### Director

**Akira Uchida**

Senior Vice President (Member of the Board)  
Toray Industries, Inc.

### Director

**Masakazu Kubota**

Senior Managing Director,  
KEIDANREN (Japan Business Federation)

### Director

**Ritsuro Koza**

Senior Managing Director,  
Nomura Securities Co., Ltd.

### Director

**Masahiko Koyanagi**

Executive Director,  
Japan Securities Dealers Association

### Director

**Yasushi Tachihara**

Executive Officer,  
SMBC Nikko Securities Inc.

### Director

**Ayumi Tomoda**

Operations Head,  
Citigroup Global Markets Japan Inc.

### Director

**Masahisa Nakagawa**

Senior Managing Director,  
Daiwa Securities Co. Ltd.

### Director

**Kunihisa Hama**

Lawyer

### Director

**Hideki Hiraki**

Managing Executive Officer,  
Sumitomo Mitsui Trust Bank, Limited

### Director

**Masayuki Hoshi**

Managing Executive Officer,  
Mizuho Corporate Bank, Ltd.

### Director

**Shigeyuki Maeda**

Professor of Law,  
Professional School of Law (Law school),  
Gakushuin University

### Director

**Kanetsugu Mike**

Managing Director, Chief Executive,  
Information Systems & Operations  
The Bank of Tokyo-Mitsubishi UFJ, Ltd.

### Director

**Kaoru Wachi**

Deputy President,  
Mitsubishi UFJ Trust and Banking Corporation

### Standing Auditor

**Hiroshi Kitta**

### Auditor

**Kenzo Ohara**

Senior Executive Officer,  
Tokai Tokyo Securities Co., Ltd.

### Auditor

**Masaki Tachibana**

Managing Director,  
Sumitomo Mitsui Banking Corporation

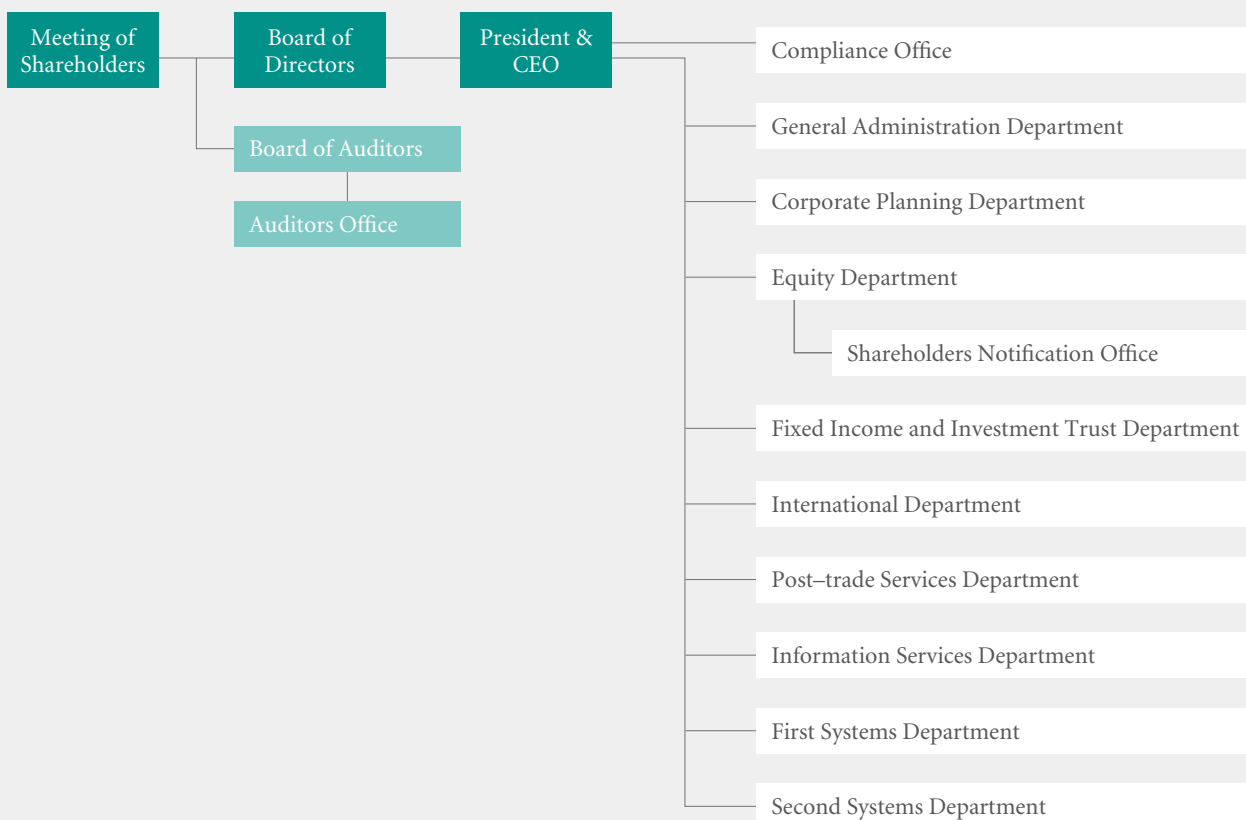
## Shares

Total shares approved for issue	10,000
Total issued shares	8,500
Paid-in capital	¥4,250,000,000
Shareholders	149

## Major shareholders

	Number of shares held	Stake in Company (%)
Tokyo Stock Exchange Group, Inc.	1,930	22.70
Japan Securities Dealers Association	1,050	12.35
Nomura Holdings, Inc.	485	5.70
The Bank of Tokyo-Mitsubishi UFJ, Ltd.	425	5.00
Mizuho Corporate Bank, Ltd.	425	5.00
Mitsubishi UFJ Trust and Banking Corporation	424	4.98
Trust & Custody Services Bank, Ltd.	340	4.00
Citigroup Global Markets Japan Inc.	321	3.77
Japan Trustee Services Bank, Ltd.	320	3.76
Daiwa Securities Capital Markets Co. Ltd.	230	2.70

## Organization structure





**Japan Securities Depository Center, Inc.**

Daini-Shoken Kaikan Bldg, 1-1, Nihombashi-Kayaba-cho 2-chome, Chuo-ku, Tokyo 103-0025, JAPAN

TEL +81-3-3661-0139 <http://www.jasdec.com/en/>