

## CORPORATE DATA

(As of July 24, 2015)

## Company Outline

Corporate Name	Japan Securities Depository Center, Incorporated
Registered Office Address	1-1 Nihombashi-Kayaba-cho, 2-chome, Chuo-ku, Tokyo, Japan
Established	January 4, 2002
Representative	President and CEO Haruhiko Kato
Major Businesses	(1) Book-entry transfer for stocks, etc. (2) Book-entry transfer for commercial paper (3) Book-entry transfer for corporate bonds (4) Book-entry transfer for investment trusts (5) DVP settlement services for NETDs (6) Pre-settlement matching system (7) Custody services for foreign stocks, etc. (8) Other businesses
Operational Office	Chuo-ku, Tokyo
Consolidated Subsidiary	JASDEC DVP Clearing Corporation (Chuo-ku, Tokyo)
Number of Employees	222

## Board Members and Executive Officers

## Members of the Board

## Member

Haruhiko Kato

## Member

Munetaka Saito

## Outside Member

Mamoru Kamio

## Outside Member

Moriyuki Iwanaga

Senior Executive Officer,  
Japan Exchange Group, Inc.  
Senior Executive Officer,  
Tokyo Stock Exchange, Inc.

## Outside Member

Masakazu Kubota

Director General,  
KEIDANREN (Japan Business  
Federation)

## Outside Member

Kazuya Kobayashi

Managing Executive Officer,  
Mizuho Financial Group, Inc.  
Managing Executive Officer,  
Mizuho Bank, Ltd.

## Outside Member

Masayuki Shimura

Senior Managing Director,  
Sumitomo Mitsui Financial Group, Inc.  
Senior Managing Director,  
Sumitomo Mitsui Banking Corporation

## Outside Member

Masahisa Nakagawa

Executive Managing Director,  
Daiwa Securities Group Inc.  
Executive Managing Director,  
Daiwa Securities Co. Ltd.

## Outside Member

Hideki Hiraki

Senior Managing Executive Officer,  
Sumitomo Mitsui Trust Bank, Limited

## Outside Member

Koichi Hirata

Senior Executive Director,  
Japan Securities Dealers Association

## Outside Member

Shigeyuki Maeda

Lawyer

## Outside Member

Hisato Miyashita

Senior Managing Director,  
Nomura Holdings, Inc.  
Representative Executive Officer,  
Senior Corporate Managing Director,  
Nomura Securities Co., Ltd.

## Outside Member

Satoshi Murabayashi

Managing Executive Officer,  
Mitsubishi UFJ Financial Group, Inc.  
Senior Managing Director,  
The Bank of Tokyo-Mitsubishi UFJ, Ltd.

## Board Committee Members

## Nominating

Haruhiko Kato

Moriyuki Iwanaga

Koichi Hirata

## Compensation

Masakazu Kubota

Hisato Miyashita

Satoshi Murabayashi

## Audit

Mamoru Kamio (Full-time)

Masayuki Shimura

Shigeyuki Maeda

## Executive Officers

Representative Executive Officer,  
President and CEO

Haruhiko Kato

Senior Executive Officer  
(Business Operations)

Munetaka Saito

Senior Executive Officer  
(Corporate Administration), CRO

Hideki Kono

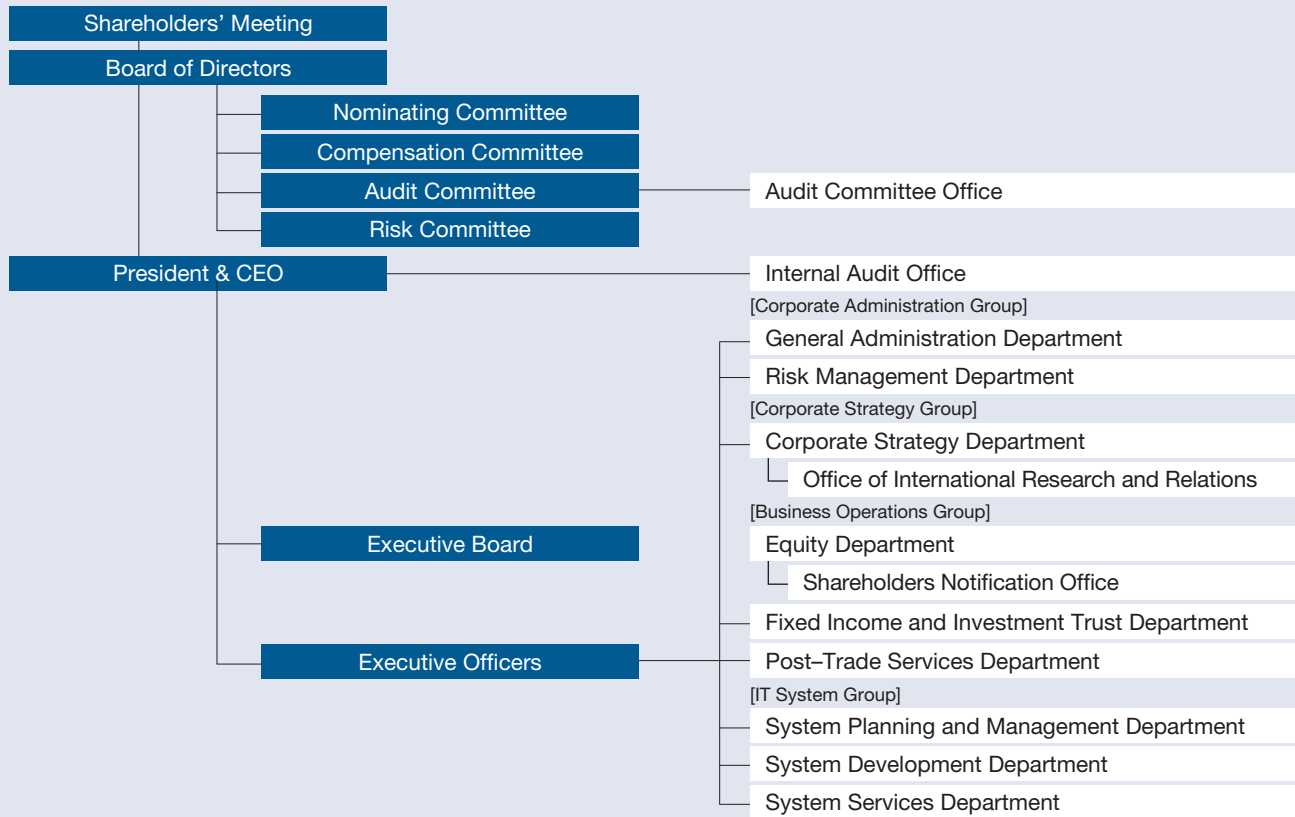
Senior Executive Officer  
(Corporate Strategy)

Jun Sugie

Senior Executive Officer  
(IT System), CIO

Yoshinori Suzuki

## Organization Structure



## Major Shareholders

	Number of shares held	Stake in Company (%)
Japan Exchange Group, Inc.	2,073	24.38
Japan Securities Dealers Association	1,067	12.55
Nomura Holdings, Inc.	485	5.70
The Bank of Tokyo-Mitsubishi UFJ, Ltd.	425	5.00
Mizuho Bank, Ltd.	425	5.00
Mitsubishi UFJ Trust and Banking Corporation	424	4.98
Daiwa Securities Co. Ltd.	360	4.23
Trust & Custody Services Bank, Ltd.	340	4.00
Citigroup Global Markets Japan Inc.	321	3.77
Japan Trustee Services Bank, Ltd.	320	3.76

## Shares

Total shares approved for issue	20,000
Total issued shares	8,500
Paid-in capital	¥4,250,000,000
Shareholders	127

**Japan Securities Depository Center, Inc.**

Daini-Shoken Kaikan Bldg., 1-1, Nihombashi-Kayaba-cho 2-chome, Chuo-ku, Tokyo 103-0025, JAPAN

TEL +81-3-3661-0139 <http://www.jasdec.com/en/>